
IMAGIC-5 GUI

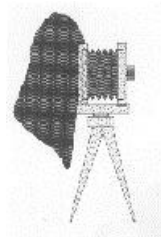


This manual is a little introduction into the MS Windows version of IMAGIC-5.

All rights reserved

© Image Science Software GmbH
Berlin, Germany
www.ImageScience.de

WELCOME TO THE
MAGIC WORLD
OF IMAGIC



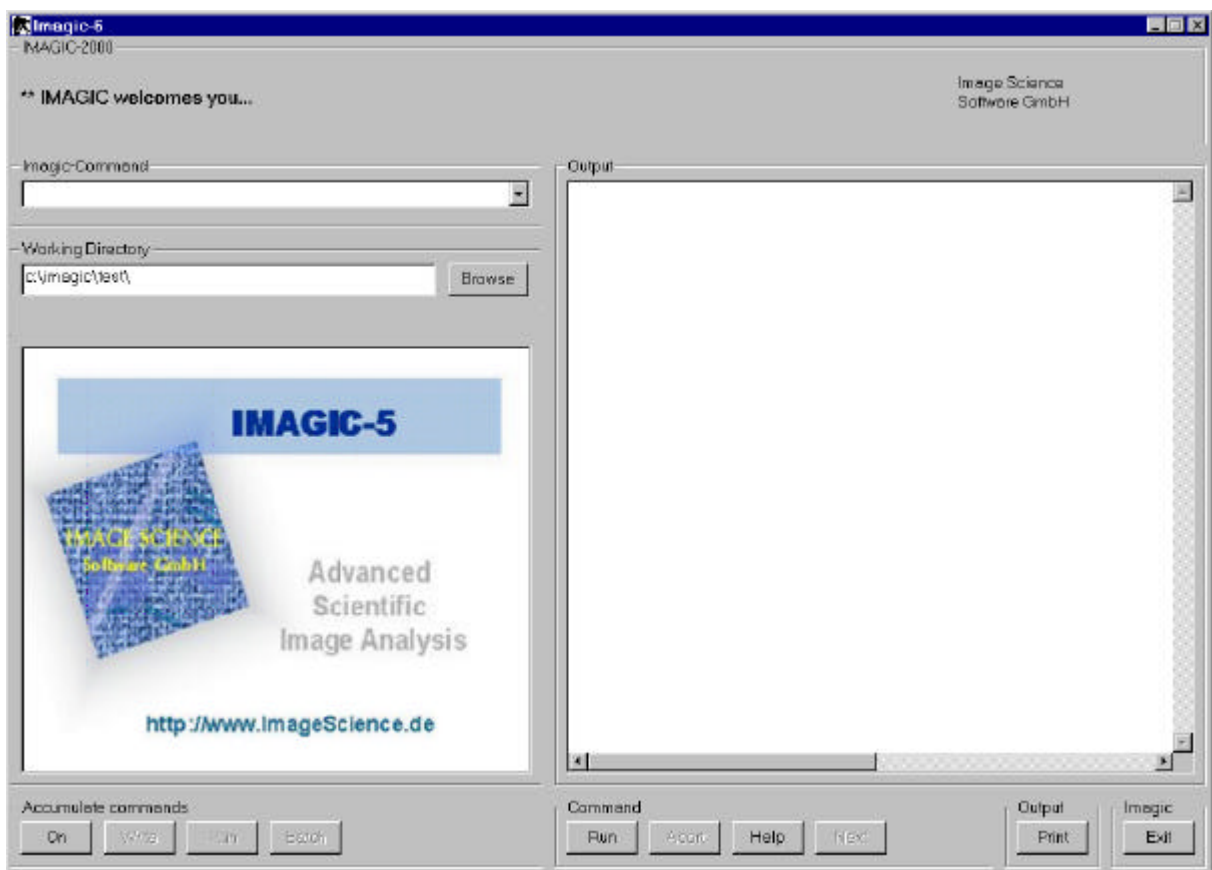
Introduction to IMAGIC-5 GUI

This manual only describes how to use the GUI version of IMAGIC-5. Please refer to the related manuals to learn which commands are needed for your analysis.

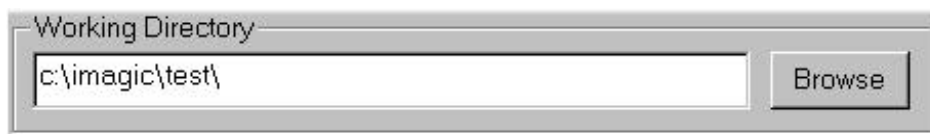
Using IMAGIC-5 GUI:

Start file [gui](#) or [gui.exe](#) to run the GUI version of IMAGIC-5. Of course, it is a good idea to create a corresponding shortcut on your desktop.

The starting window will look like this:



Use [Working Directory](#) to specify the directory where all files should be stored:



You can either type the name of the directory interactively or use the [Browse](#) button.

IMAGIC-5: GUI

Use [Imagic command](#) to choose an IMAGIC-5 command:



A screenshot of a GUI window titled "Imagic-Command". It features a text input field that is currently empty, with a small downward-pointing arrow button on the right side of the field.

You can either type the name of the command interactively or use the "arrow" button. It is also possible to type an abbreviation of the command name followed by [Run](#).



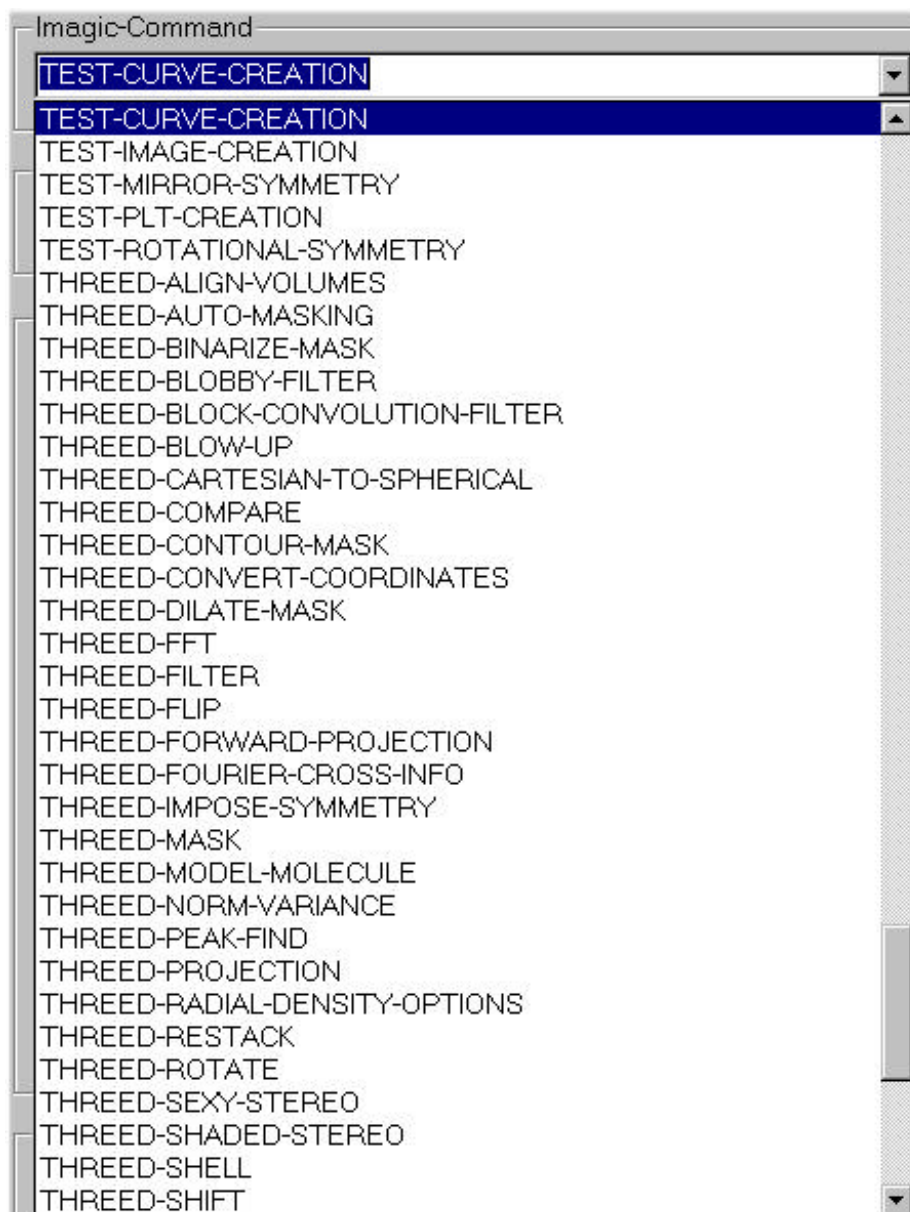
A screenshot of the same "Imagic-Command" GUI window. The text input field now contains the characters "te-im".

IMAGIC -5 tries to find the correct name:



A screenshot of the "Imagic-Command" GUI window. The text input field now contains "TEST-IMAGE-CREATION", which is highlighted in blue, indicating it is the suggested command name.

If the given command is ambiguous you will get a list of commands:

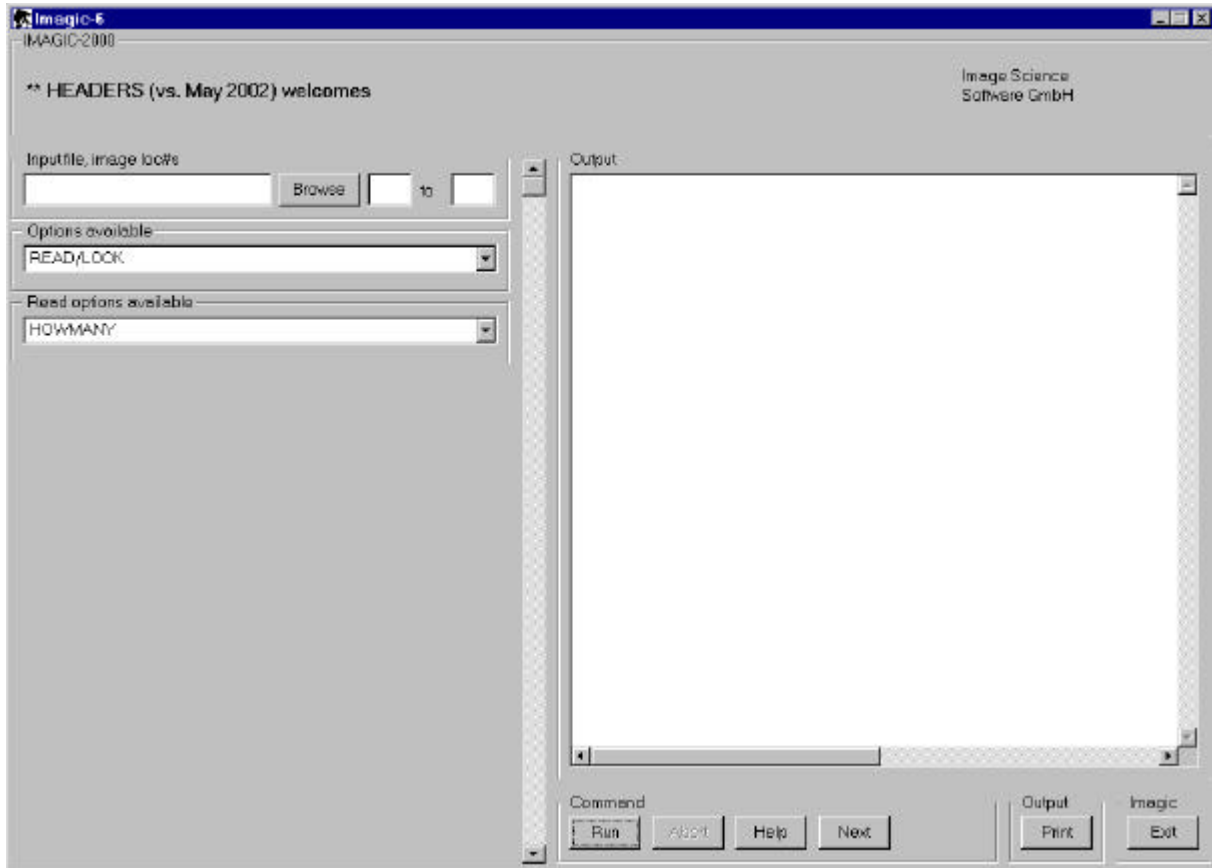


If you have found the correct command use the [Run](#) button to start the command:



IMAGIC-5: GUI

Another window will appear and you will be asked to specify the input for the given command (see related manuals):



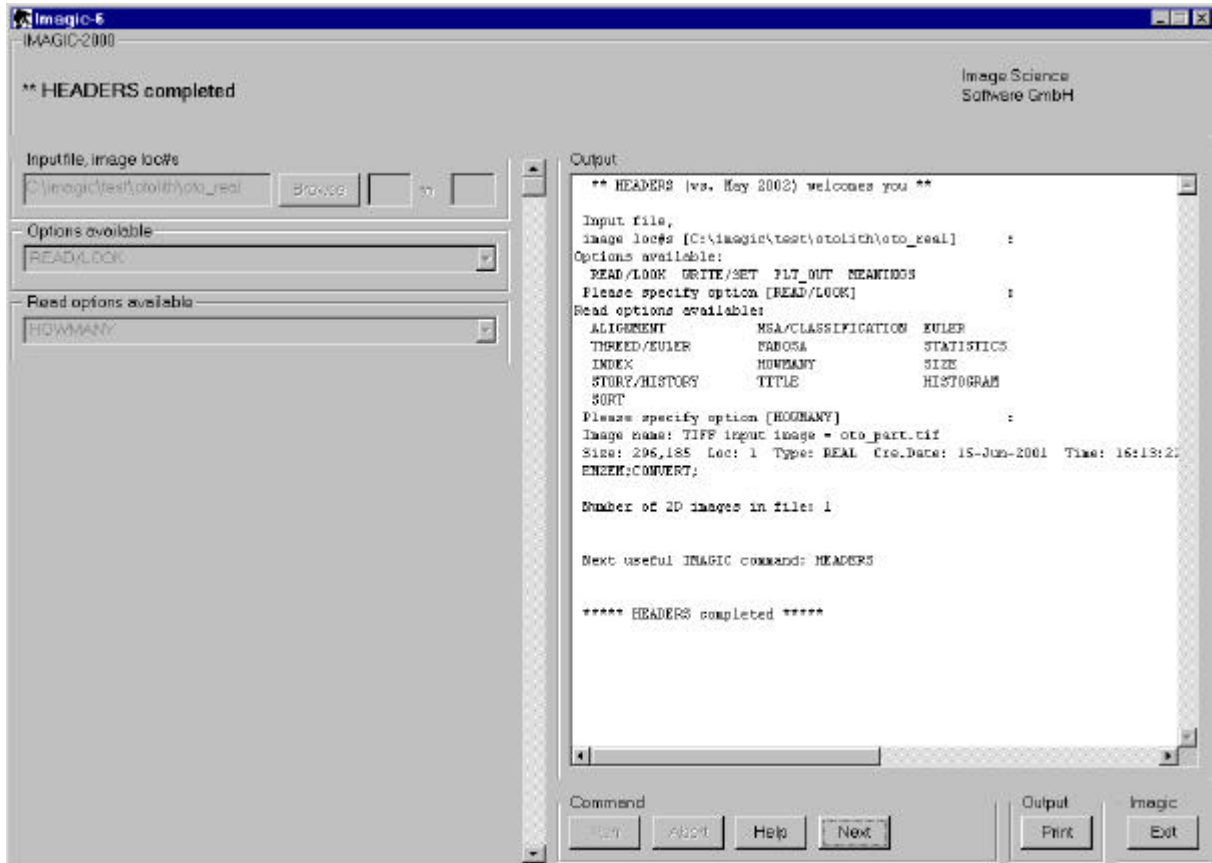
Please specify all necessary input by using the "arrow" and [Browse](#) buttons as well as by typing answers interactively.

If all answers are given you can use the [Run](#) button to start the command which will subsequently do the related calculations.

If you do not want to start this command use the [Next](#) button to give a new/next command. If you want to abort the command during the execution of the command use the [Abort](#) button.

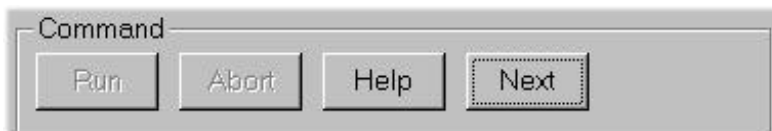
IMAGIC-5: GUI

If you have started an IMAGIC-5 command all output files will be created and stored in the working directory. The program output will be written into the window on the right hand side:



You can use the [Print](#) button to print everything.

To continue and use the next IMAGIC-5 command use button [Next](#).



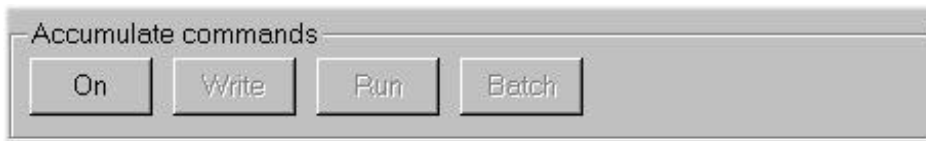
Back again in the starting page IMAGIC-5 will suggest a new command (if possible).

If all work is done use the **EXIT** button, leave IMAGIC-5 and go have a beer.



Some additional remarks:

You can also use the MODE-ACCUMULATE commands to accumulate commands in script/batch files (see the IMAGIC-5 **BEGINNER** manual). In this case use the **ON** button in **Accumulate commands** before you type in the IMAGIC-5 commands:



Stop accumulating commands by giving **WRITE** (to create a script/batch file), **RUN** to execute the accumulated commands immediately.

Command DISPLAY is still MSDOS related. You can run **view** or **view.exe** instead. See manual: **IMAGIC-5 Viewer**.